



Student Transportation Services of Waterloo Region

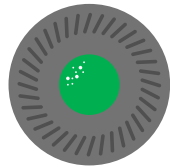


St. John's
Catholic Elementary School

SCHOOL TRAVEL PLANNING



30 minutes



St. John's
Catholic Elementary School

Benefits of Active Travel

Winter Walk Day

Drive to 5

Questions



Brain Activity



No exercise
(after sitting)



Exercise
(after walking)

Programs: Drive to 5, Bike Bus, Sidewalk Smarts, Bike to School Week, Community Road Model, CAA Standing Foot Patrol, Anti-idling, Trailblazers, Winter Walk Day, Walking School Bus, School Streets

Physical Health | Mental Focus | Environmental Well-Being | Fun & Happiness | Graduated Independence





THE WALK ZONE



Enrolment: 457

Walker: 211

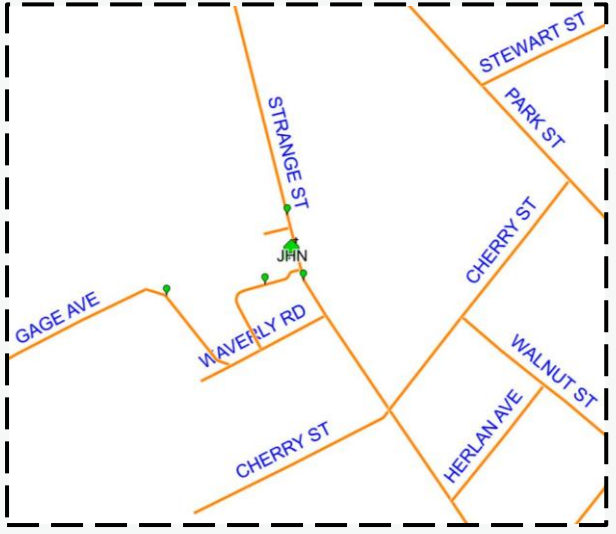
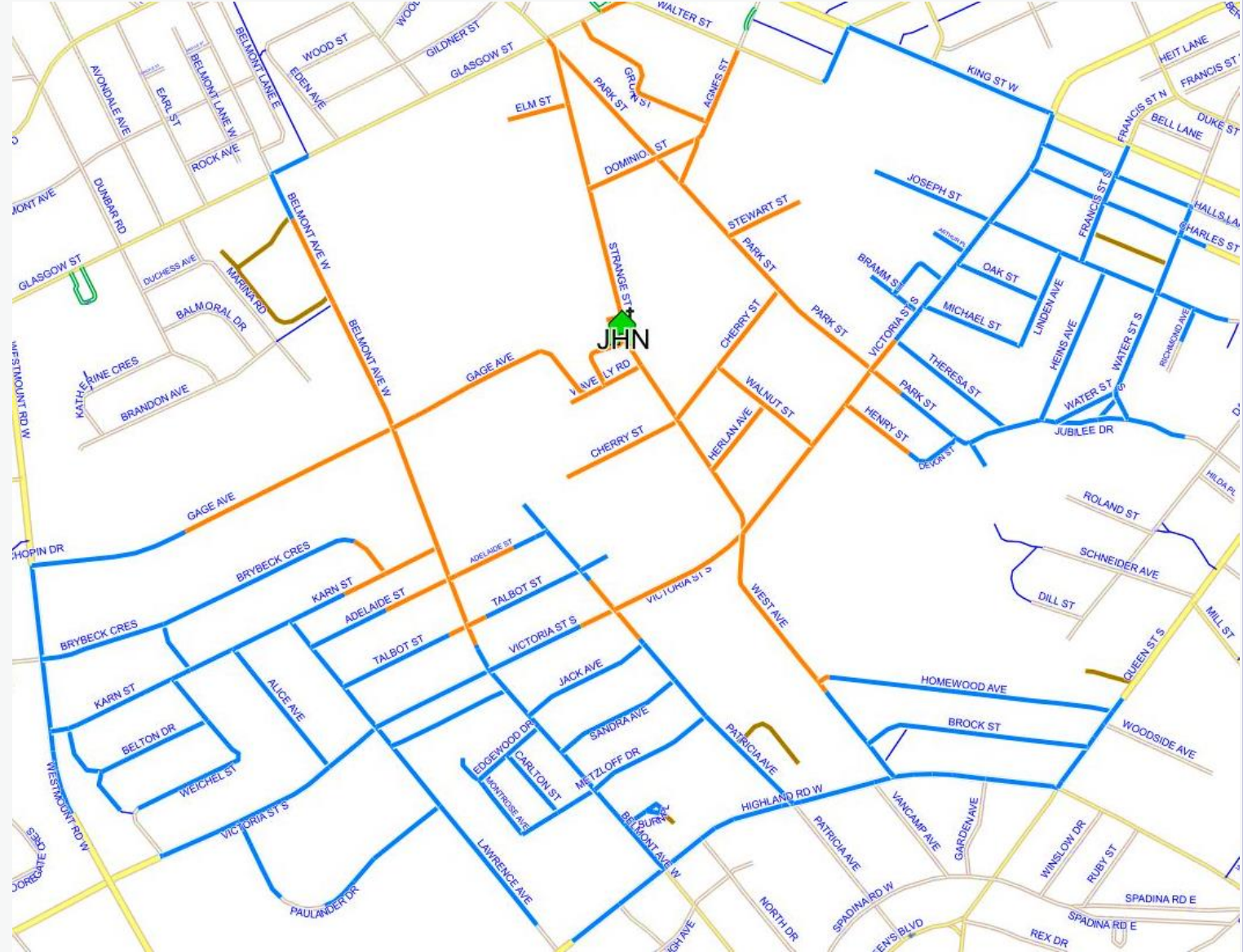
JK = 800m (0.8km)

Gr. 4 = 1600m (1.6km)

Other: 246

WCDSB JK-Gr. 3 = >800m Gr. 4-8 = >1600m

WRDSB JK/SK = >800m Gr. 1-8 = >1600m



- ❖ Celebrates students who walk
- ❖ Encourages active transportation
- ❖ All students can participate
Bussed students can walk to their bus stop
Driven students can walk a few blocks
- ❖ Schools can win 1/3 \$250 gift cards
- ❖ Students can win 1/5 \$25 Indigo gift cards

JOURNEY
OUT
SIDE



LET'S WALK! *and roll!* WINTER WALK DAY FEBRUARY

February 7th, 2024

(If schools are closed, WWD will be held on February 14th)

Register for a chance to win a \$20 Indigo gift card! Walk/ wheel from home or park and walk a few blocks to qualify.

bit.ly/2024_WWD_Student

or scan the QR code!



Celebrate, don't hibernate!
Walk or roll to school this winter!

Ontario Active
School Travel

 @GrnCommunities

Green
Communities
CANADA



www.ontarioactiveschooltravel.ca



St. John Parking Map

-  School Site
-  Sidewalks
-  Painted Pedestrian Crosswalks

Trails

-  Not Winter Maintained
-  Winter Maintained

Intersection Details

-  Stop Sign
-  Pedestrian Crossover
-  Signalized Crossing
-  Pedestrian Refuge Island

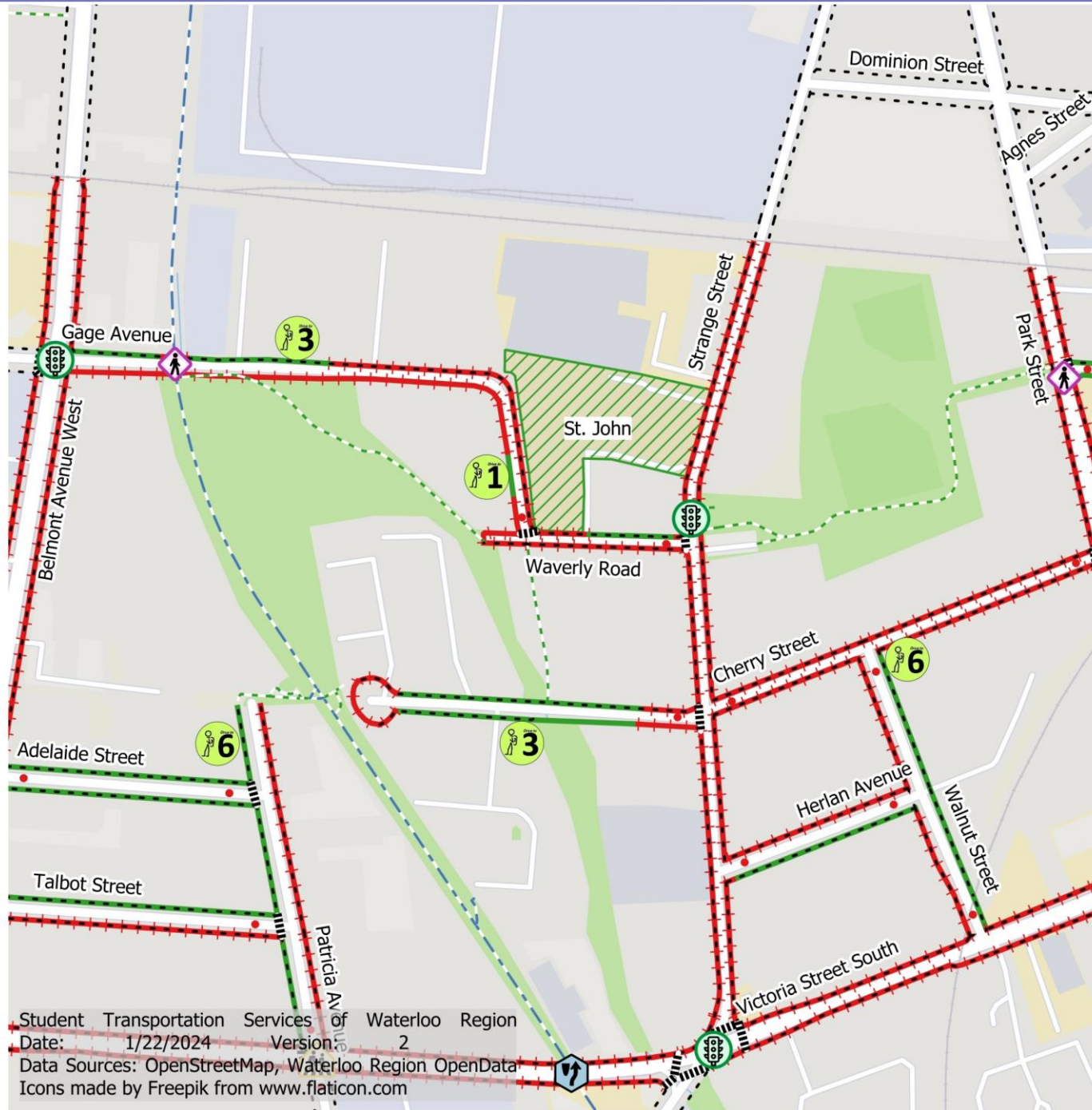
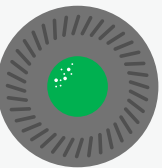
Parking Areas

-  Parking Restrictions Apply
-  On-Street Parking

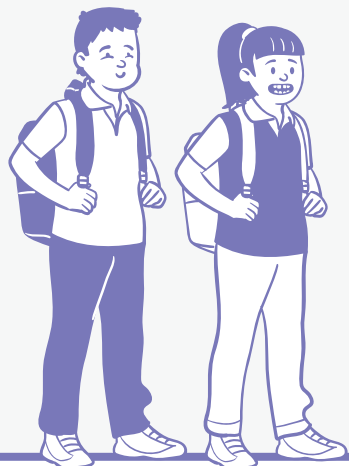
Park And Walk Locations

-  5 Walk Time (min)

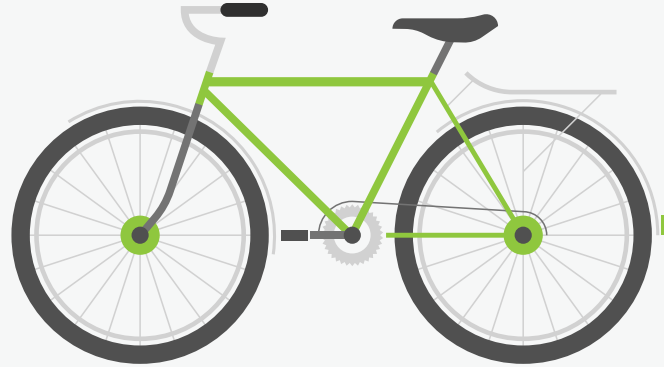
User must adhere to all applicable municipal and provincial traffic laws and By-laws. Legal parking areas do not guarantee a safe route to school.



Student Transportation Services of Waterloo Region
 Date: 1/22/2024 Version: 2
 Data Sources: OpenStreetMap, Waterloo Region OpenData
 Icons made by Freepik from www.flaticon.com

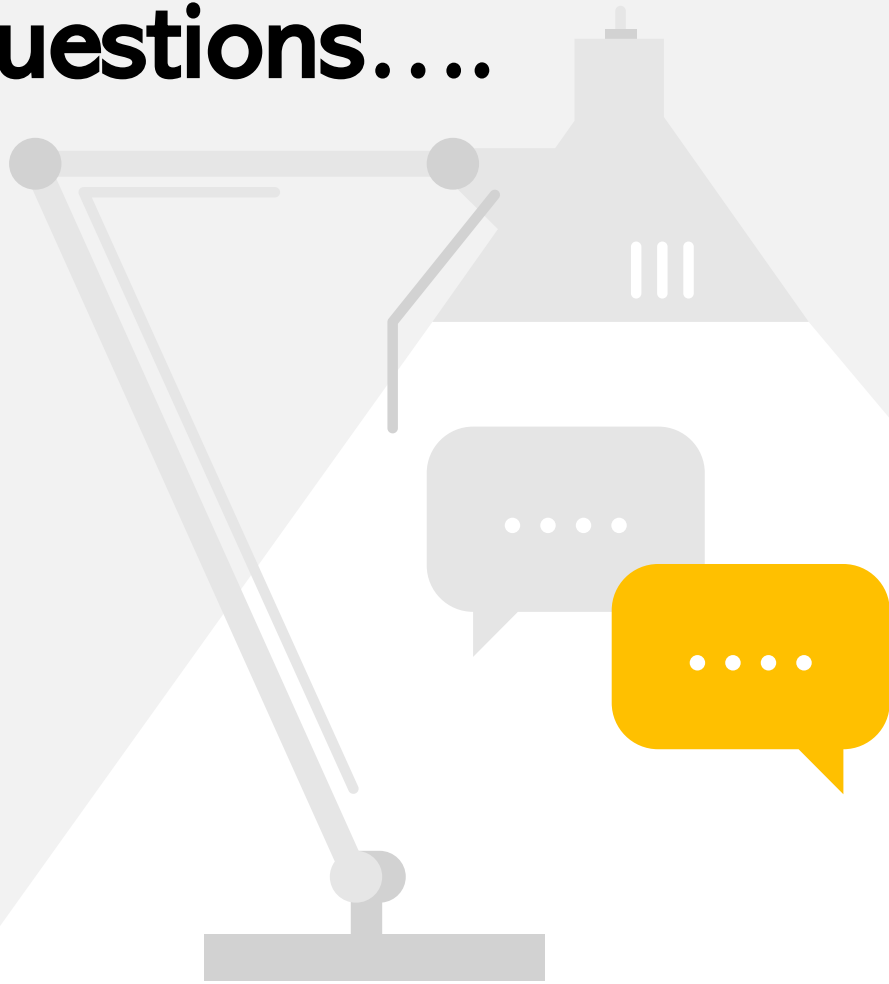


Thank you



Transportation Tech: debby_gravenor@stswr.ca
Spec-Ed Tech: americo_medina@stswr.ca

Questions....



email: landon_chan@stswr.ca

