



Special Board of Trustees' Board Meeting

Date: Monday, November 7, 2022

Time: 6:00 p.m.

** Committee of the Whole In Camera, if necessary, will precede or follow the Board Meeting, as appropriate.*

Location: 1st floor Board Room, Catholic Education Centre, 35 Weber Street, Kitchener

Attendees: **Board of Trustees:**
Bill Conway, Manuel da Silva, Jeanne Gravelle (Chair), Shannon Nash, Wendy Price, Hans Roach, Brian Schmalz, Melanie Van Alphen, Tracey Weiler

Student Representatives:
Chloe Armstrong, Anika Fejerpataky

Senior Administration:
Tyrone Dowling, Gerald Foran, Gerry Clifford, Shesh Maharaj, Judy Merkel, Kerry Pomfret, Jennifer Ritsma, Annalisa Varano

Special Resource:

Recording Secretary:
Alice Figueiredo

ITEM	Who	Agenda Section	Method & Outcome
1. Call to Order	Chair		
1.1 Opening Prayer/Memorials	Board of Trustees		
1.2 Territorial Acknowledgement I (we) would like to begin by acknowledging that the land on which we gather today is the land traditionally used by the Haudenosaunee, Anishinaabe and Neutral People. I (we) also acknowledge the enduring presence and deep traditional knowledge, laws and philosophies of the Indigenous People with whom we share this land today.	Chair		
1.3 Approval of Agenda	Board of Trustees		Approval
1.4 Declaration of Pecuniary Interest	Individual Trustees		
1.4.1 From the current meeting			
1.4.2 From a previous public or in-camera meeting			
1.5 Items for Action: NA			
2. Consent Agenda: Director of Education (e.g.: day –to –day operational matters from the Ministry of Education that the Board is required to do)			
3. Consent Agenda: Board (Minutes of meetings, staff report)			
3.1 Approval of Minutes of Regular and Special Meetings			

ITEM	Who	Agenda Section	Method & Outcome
4. Delegations/Presentation			
5. Advice from the CEO			
5.1 Delegations / Q&A - East Kitchener Boundary Review Recommendations	S. Maharaj	pp.4-12	Decision
6. Ownership Linkage (Communication with the External Environment)			
7. Reports from Board Committees/Task Forces			
8. Board Education (at the request of the Board)			
9. Policy Discussion			
10. Assurance of Successful Board Performance			
11. Assurance of Successful Director of Education Performance			
12. Potential Agenda Items/Trustee Inquiry Report (CEO)			
13. Announcements			
13.1 Upcoming Meetings/Events (all scheduled for the Catholic Education Centre unless otherwise indicated):	Chair	--	Information
13.2 Pending Items: 13.3 Pending Items for OCSTA Consideration	<u>Committee/Task Force</u>	<u>Due Date</u>	<u>Action Taken</u>
14. Items for the Next Meeting Agenda	Trustees		
	Board of Trustees	--	Information
15. Adjournment Confirm decisions made tonight	Director of Education		
15.1 Confirm Decision Made Tonight	Recording Secretary	--	Information
16. Closing Prayer			
17. Motion to Adjourn	Board of Trustees	Motion	Approval

CLOSING PRAYER

O Risen Lord, you have entrusted us with the responsibility to help form a new generation of disciples and apostles through the gift of our Catholic schools.

As disciples of Christ, may we educate and nurture hope in all learners to realize their full potential to transform God's world.

May our Catholic schools truly be at the heart of the community, fostering success for each by providing a place for all.

May we and all whom we lead be discerning believers formed in the Catholic faith community; effective communicators; reflective and creative thinkers; self-directed, responsible, life-long learners; collaborative contributors; caring family members; and responsible citizens.

Grant us the wisdom of your Spirit so that we might always be faithful to our responsibilities.

We make this prayer through Christ our Lord.

Amen

Rev. Charlie Fedy, CR and the Board of Trustees, 2010



Date: November 7, 2022
To: Board of Trustees
From: Director of Education
Subject: East Kitchener 7-12 Boundary Review – Response to Trustee Questions #2

- Type of Report:**
- Decision-Making
 - Monitoring
 - Incidental Information concerning day-to-day operations
- Type of Information:**
- Information for Board of Trustees Decision-Making
 - Monitoring Information of Board Policy **XX XXX**
 - Information only of day-to-day operational matters delegated to the CEO

Origin: (cite Education Act and/or Board Policy or other legislation)

[Administrative Procedures Memorandum APF008 – Pupil Accommodation Review Process](#)

Part A – Boundary Review

Following the public consultation process, staff will submit a final staff report to the Board of Trustees. This report will include an overview of the process and materials considered, the recommended option, and implementation recommendations.

The final staff report will be made available to the public and posted on the board’s website.

[2022 Abridged Long Term Accommodation Plan](#)

Board Report – October 17, 2022: East Kitchener 7-12 Boundary Review – Final Staff Report

Policy Statement and/or Education Act/other Legislation citation:

Board Policy IV 010: Facilities/Accommodations *the CEO shall not ...*

2. Fail to conduct accommodation reviews process (i.e. boundary review and school closures) that is not in compliance with current Ministry of Education guidelines and directives.”

Alignment to the MYSP:

There is no active MYSP.

Background/Comments:

On April 25, 2022, the Board of Trustees initiated a boundary review involving Canadian Martyrs Catholic Elementary School (CES), Saint John Paul II CES, St. Anne (K) CES, St. Daniel CES, and St. Mary’s High School.



On October 17, 2022, the Board of Trustees received the East Kitchener 7-12 Boundary Review Final Staff Report and on October 25, 2022, staff provided a board report to address questions received during the previous Board of Trustees meeting.

The attached report addresses further questions received from the Board of Trustees during the October 25, 2022 meeting.

Recommendation:

That the attached response report be received for information.

Prepared/Reviewed By: Tyrone Dowling
Director of Education

Gerald Foran (BRC Chair)
Superintendent of Learning

Jennifer Passy
Manager of Planning

Virina Elgawly
Property/Planning Officer

Shesh Maharaj
Executive Superintendent of Corporate Services

*4.2 DIRECTOR Monitoring Reports: Where the Board receives from the CEO a monitoring report that flows from a responsibility delegated to the Director under Board Policy – except where approval is required by the Board on a matter delegated by policy to the Board – the minutes of the Meeting at which the Report is received shall expressly provide that the Board has received and approved of the Report as an action consistent with the authority delegated to the CEO, subject in all instances to what otherwise actually occurred.





1 Extending Legacy Exceptions to Include Siblings

As indicated in the October 25, 2022 [East Kitchener 7-12 Boundary Review – Response to Trustee Questions](#) report, there are five siblings of existing students that would be provided the option to remain in their current school if legacy exceptions were extended to include siblings. This student count is based on 2021-22 school year data. If Trustees choose to extend legacy exceptions to siblings, the following revised motions would be required:

9. That Grade 5 students, and their siblings, residing within the sub-area being directed to Saint John Paul II CES who are enrolled at Canadian Martyrs CES in the 2023/2024 school year, or the school year prior to the new East Kitchener 7-12 Catholic School opening, be provided legacy exceptions to remain at their current school.

11. That Grade 5 students, and their siblings, residing within the sub-area being directed to St. Daniel CES who are enrolled at St. Anne (K) CES in the 2023/2024 school year, or the school year prior to the new East Kitchener 7-12 Catholic School opening, be provided legacy exceptions to remain at their current school.

13. That Grade 7 students, and their siblings, residing within sub-areas being directed to St. Patrick CES who are enrolled at Saint John Paul II CES, St. Anne (K) CES, or St. Daniel CES in the 2023/2024 school year, or the school year prior to the new St. Patrick CES opening, be provided legacy exceptions to attend the new East Kitchener 7-12 Catholic School.

15. That St. Patrick CES open with Grades JK-7 and that Grade 8 students, and their siblings, residing within the new St. Patrick CES boundary in the year that it opens, be granted legacy exceptions to attend the new East Kitchener 7-12 School (i.e., Grades JK-7 in 2024/25 and JK-8 in 2025/26).

2 Legacy Exceptions for Existing Students

Table 1 is a summary of how many students would be provided additional legacy exceptions should Trustees choose to allow all existing families in Sub-area Y, D, K, and C to remain at their current school.

Table 1 - Summary of Legacy Exceptions for All Students by Sub-Area

Sub-Area	2023/24 Projected Students	Grades of Legacy Exceptions
Sub-area Y	62	JK-6
Sub-Area D	38*	JK-6
Sub-Area K	32	JK-4
Sub-area C	22*	JK-4

*Excludes French Immersion students and siblings



Table 2 shows the 2024 enrolment projections based on staff's recommended legacy exceptions described in the [Final Staff Report](#).

Table 2: Option 6 Enrolment Projections with Staff Recommended Legacy Exceptions (Final Staff Report)

Option 6	Capacity	2024		
		Total	Portables (Empty Classrooms)	Utilization
Canadian Martyrs - JK to 6	314	378	2	120%
Saint John Paul II - JK to 6	611	528	(3)	86%
St. Anne (K) - JK to 8 English & Grades 1 to 8 French Immersion	521	664	6	127%
St. Daniel - JK to 6	317	234	(3)	74%
New St. Patrick - JK to 8	527	450	(3)	85%
East Kitchener (Elementary) - 7 & 8	400	370	0	93%
TOTAL	2690	2623	8*	97%

*Total represents required portables only.

Table 3 shows the 2024 enrolment projections with the assumption that all existing families within sub-areas C, D, K, and Y in the 2023/24 school year, are provided legacy exceptions to remain at their current school.

Table 3: Option 6 Enrolment Projections with Legacy Exceptions Provided to Existing Students in Sub-areas C, D, K, Y

Option 6 (with Legacy Exceptions Provided to Existing Students in Sub-areas C, D, K, Y)	Capacity	2024		
		Total	Portables (Empty Classrooms)	Utilization
Canadian Martyrs - JK to 6	314	410	3	131%
Saint John Paul II - JK to 6	611	550	(2)	90%
St. Anne (K) - JK to 8 English & Grades 1 to 8 French Immersion	521	724	8	139%
St. Daniel - JK to 6	317	212	(4)	67%
New St. Patrick - JK to 8	527	350	(7)	66%
East Kitchener (Elementary) - 7 & 8	400	377	0	94%
TOTAL	2690	2623	11*	98%

*Total represents required portables only.

3 Updated Summary of Staff Recommendations

Below are staff's recommendations as presented in the Final Staff Report. The last two recommendations have been edited to reflect the language presented in the [October 25, 2022, board report](#).

Recognizing the complexity of this review and recommendations, a sample sub-area redirection flow diagram has been prepared to illustrate the re-direction of sub-areas (Appendix A). The sample flow diagram reflects current recommendations and will be modified to align with the Board's final decisions.

Boundary and Grade Configuration

1. That the boundaries and grade configurations of Canadian Martyrs Catholic Elementary School (CES), Saint John Paul II CES, St. Anne (K) CES, St. Daniel CES, the new St. Patrick CES and East Kitchener 7-12 Catholic School be established in accordance with Option 6.



2. That Canadian Martyrs Catholic Elementary School (CES), Saint John Paul II CES, and St. Daniel CES become JK-6 and their boundaries be modified, effective September 2024 or at such time that the new schools open.
3. That Canadian Martyrs CES, Saint John Paul II CES, and St. Daniel CES students be directed to attend the new East Kitchener 7-12 Catholic School for Grades 7 and 8 and 9-12, effective September 2024 or at such time that the new schools open.
4. That St. Anne (K) CES will remain JK-8 English and Grade 1-8 French Immersion, and the new St. Patrick CES will become JK-8 and their boundaries be modified, effective September 2024 or at such time that the new schools open.
5. That St. Anne (K) CES and the new St. Patrick CES students be directed to attend the new East Kitchener 7-12 Catholic School for Grades 9-12, effective September 2024 or at such time that the new schools open.
6. That the East Kitchener 7-12 Catholic School open with Grades 7-10 as per the 7-12 Program Review recommendations (i.e., Grades 7-10 in 2024/25, 7-11 in 2025/26, and 7-12 in 2026/27).
7. That St. Mary's High School continue to be a 9-12 secondary school.
8. That Blessed Sacrament CES, new Huron Brigadoon CES, John Sweeney CES, Our Lady of Grace CES, Monsignor Haller CES, St. Aloysius CES, St. Bernadette CES, St. Kateri Tekakwitha CES, and St. Timothy CES remain part of St. Mary's High School family of schools and the St. Mary's boundary be changed to reflect its modified family of schools.

Elementary Legacy Exceptions

9. That Grade 5 students residing within the sub-area being directed to Saint John Paul II CES who are enrolled at Canadian Martyrs CES in the 2023/2024 school year, or the school year prior to the new East Kitchener 7-12 Catholic School opening, be provided legacy exceptions to finish Grade 6 at their current school.
10. **[Edited]** That students who are granted legacy exceptions to remain at Canadian Martyrs CES as of the year prior to the boundary change, be provided with transportation, if they qualify in accordance with board procedure APO012 – Transportation.
11. That Grade 5 students residing within the sub-area being directed to St. Daniel CES who are enrolled at St. Anne (K) CES in the 2023/2024 school year, or the school year prior to the new East Kitchener 7-12 Catholic School opening, be provided legacy exceptions to finish Grade 8 at their current school.
12. **[Edited]** That students who are granted legacy exceptions to remain at St. Anne (K) as of the year prior to the boundary change, be provided with transportation, if they qualify in accordance with board procedure APO012 – Transportation.
13. That Grade 7 students residing within sub-areas being directed to St. Patrick CES who are enrolled at Saint John Paul II CES, St. Anne (K) CES, or St. Daniel CES in the 2023/2024 school year, or the school year prior to the new St. Patrick CES opening, be provided legacy exceptions to attend the new East Kitchener 7-12 Catholic School for Grade 8 onwards.
14. That Grade 7 students who are granted legacy exceptions to attend the East Kitchener 7-12 Catholic School for Grade 8 be provided with transportation, if they qualify in accordance with board procedure APO012 – Transportation.



15. That St. Patrick CES open with Grades JK-7 and that Grade 8 students residing within the new St. Patrick CES boundary in the year that it opens, be granted legacy exceptions to attend the new East Kitchener 7-12 School (i.e., Grades JK-7 in 2024/25 and JK-8 in 2025/26).

Secondary Grade Configuration

16. That Grade 10-12 students residing within elementary school boundaries being directed to the new East Kitchener 7-12 Catholic School who are enrolled at St. Mary's High School in the 2023/2024 school year, or the school year prior to the new East Kitchener 7-12 Catholic School opening, will remain at St. Mary's High School until they graduate.
17. That Grade 10-12 students who are enrolled at St. Mary's High School in the 2023/2024 school year, or the school year prior to the new East Kitchener 7-12 Catholic School opening, be provided with transportation, if they qualify in accordance with board procedure APO012 – Transportation.

Elementary French Immersion

18. That Grade 1-7 students residing in sub-areas C and D being directed to St. Daniel CES or St. Patrick CES who are enrolled at St. Anne (K) CES for French Immersion in the 2023/2024 school year, or the school year prior to the new St. Patrick CES opening, be provided legacy exceptions to finish Grade 8 French Immersion at St. Anne (K) CES.
19. That siblings of French Immersion students who are also enrolled at St. Anne (K) CES in the 2023/2024 school year, or the school year prior to the new St. Patrick CES opening, be provided a legacy exception to remain at St. Anne (K) CES until their French Immersion sibling finishes Grade 8, at which time the non-French Immersion student is expected to attend their designated home school.
20. That Grade 1-7 students who are granted legacy exceptions to attend St. Anne (K) CES for French Immersion until Grade 8, and their siblings registered and attending St. Anne (K) CES in the 2023/2024 school year, or the school year prior to the new St. Patrick CES opening, be provided with transportation, if they qualify in accordance with board procedure APO012 – Transportation.

Secondary French Immersion

21. That Grade 8 students who are enrolled at St. Anne (K) CES for French Immersion in the 2022/2023 school year be directed to attend St. David Catholic Secondary School (CSS) for Grade 9 French Immersion beginning in 2023/2024 with board-provided hub-model transportation.
22. That Grade 8 students who are enrolled at St. Anne (K) CES for French Immersion in the 2023/2024 school year, or the year prior to the new East Kitchener 7-12 Catholic school opening, be directed to attend the new East Kitchener 7-12 Catholic School.
23. That Grade 9 French Immersion students who are enrolled at St. David CSS and residing in the St. Anne (K) French Immersion attendance area in the 2023/2024 school year or the year prior to the opening of the new East Kitchener 7-12 Catholic School, be directed to attend the new East Kitchener 7-12 Catholic School for Grade 10-12 with transportation if they qualify in accordance with board procedure APO012 – Transportation.
24. That, if the opening of the new East Kitchener 7-12 Catholic School opening is delayed beyond 2024/2025, that French Immersion students in Grades 10 or above who are enrolled at St. David CSS in the year prior to the opening of the new school who resides within the St. Anne (K) CES French Immersion attendance area, remain at St. David CSS until graduation with board-provided hub-model transportation and that any Grade 9 French Immersion student who resides within the St. Anne (K) CES French Immersion attendance area be



directed to the new East Kitchener 7-12 Catholic School for Grade 10 onwards. Grade 10 or above French Immersion Students may remain at St. David CSS as Out of Boundary students, without board-provided transportation.

Timing

25. That, if the opening of the new St. Patrick CES precedes the opening of the East Kitchener 7-12 Catholic School opening, that the boundaries of Canadian Martyrs CES, Saint John Paul CES, St. Anne (K) CES, St. Daniel CES, and St. Patrick CES be established in accordance with the preferred option, Option 6, but with a grade JK-8 configuration for all existing schools, until such time that the East Kitchener 7-12 Catholic School opens. St. Patrick CES would open with Grades JK-7 and Grade 8 students residing within the new St. Patrick CES boundary in the year that it opens, be granted legacy exceptions to remain at their current school for Grade 8.

Capping & Appeal Process

26. **[Edited]** That new Out of Boundary admissions to Canadian Martyrs CES, Saint John Paul II CES, St. Anne(K) CES, and St. Daniel CES be considered by special administrative level committee, prior to the opening of the new St. Patrick CES and East Kitchener 7-12 Catholic School. Admission of Out of Boundary students in unusual and extraordinary circumstances will be considered if:
 - A student's mental, physical, or academic well-being would likely be compromised if they were moved.
 - Upon the professional consideration of school and board staff, there is a determination that a student's unique personal and educational needs are better served at the current school.
 - There are unique health and safety considerations pertaining to the student, that are better served at the current school and which are verified by school and board staff.

Transition

27. **[Edited]** That a Transition Planning Committee, which includes students, be formed in the year prior to the opening of the new St. Patrick CES and East Kitchener 7-12 Catholic School to support all students whose school direction will be affected as a result of the East Kitchener 7-12 Boundary Review and to solicit input from staff who support equity initiatives, as required.

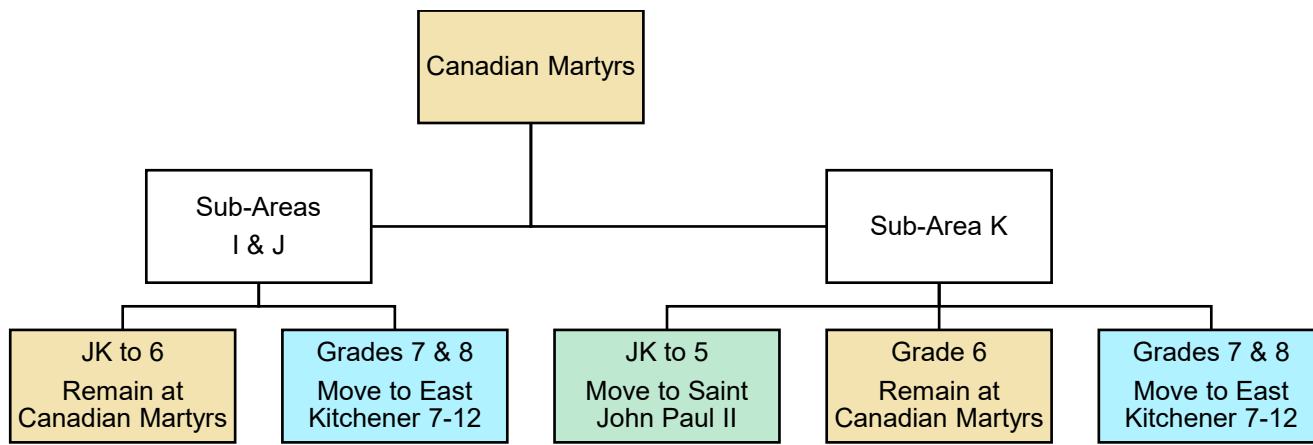


Appendix A

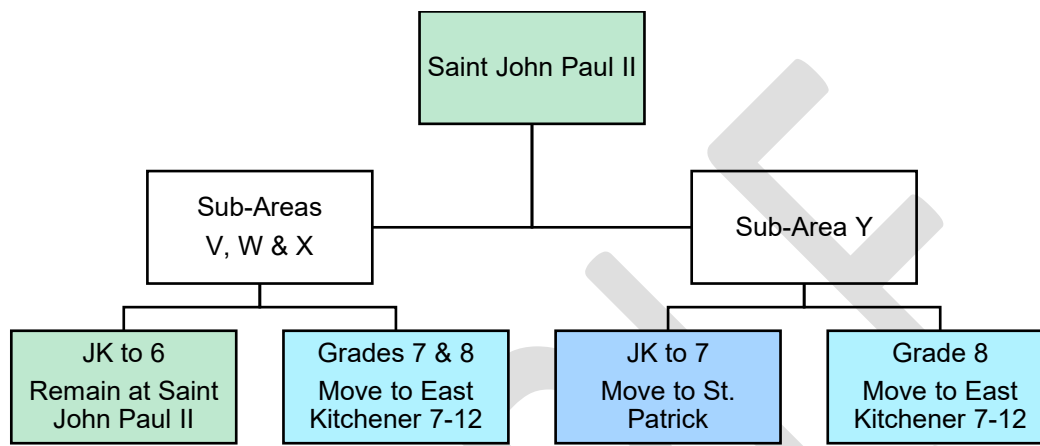


SAMPLE SUB-AREA RE-DIRECTION FLOW DIAGRAM

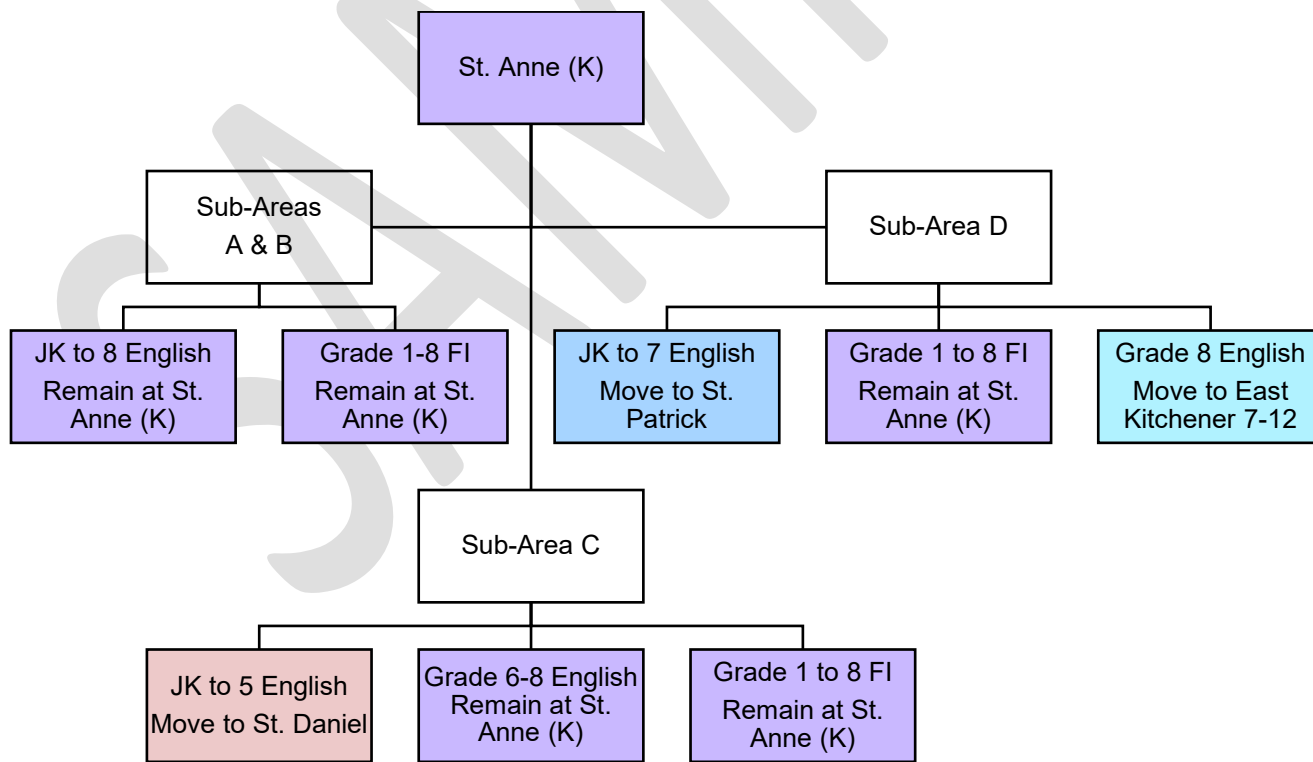
CANADIAN MARTYRS CES – 2024/25 SUB-AREA RE-DIRECTION



SAINT JOHN PAUL II – 2024/25 SUB-AREA RE-DIRECTION



ST. ANNE (K) – 2024/25 SUB-AREA RE-DIRECTION



ST. DANIEL – 2024/25 SUB-AREA RE-DIRECTION

