



Waterloo Catholic
District School Board

35 Weber Street West • P.O. Box 91116 • Kitchener Ontario Canada • N2G 4G2
Telephone: 519.578.3660



News Release

September 10, 2013
For immediate release

Construction of New Catholic Elementary School in Cambridge (Hespeler) Underway

Ground-breaking Ceremony for St. Gabriel CES Set for September 26

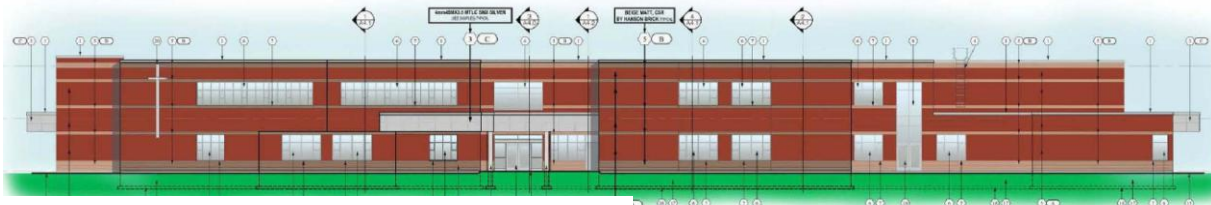
Waterloo Region, ON – Construction of the new 350 pupil place *St. Gabriel Catholic Elementary School* on Guelph Avenue (at Baldwin Dr.) in Cambridge (Hespeler) is underway.

The new JK to Grade 8 school will open in September, 2014 and will be offering full day Kindergarten along with extended day before and after-school programs if there is sufficient demand.

To commemorate the start of construction a special ground-breaking and blessing ceremony will take place at **10:00 a.m. on Thursday, September 26, 2013** at the school site. Students from *St. Elizabeth CES* and *Our Lady of Fatima CES* who are designated to attend the new school will be on hand for this special event.

Construction of the new school was approved as part of a school boundary review in Cambridge (Hespeler) in 2010-11. The final report of the review committee is available on the WCDSB website at: www.wcdsb.ca/about/accom/Hespeler/index.html.

The web page also contains important school boundary information for local residents.



Architect's Drawing – Front Elevation

The Waterloo Catholic District School Board, representing more than 100,000 Catholic school supporters, operates 50 schools and five adult education facilities serving more than 40,000 elementary, secondary and continuing education students in Waterloo Region – continuing a 177-year tradition of quality, inclusive, faith-based education. Follow us on Twitter: **@WCDSBNewsWire - #WCDSBAwesome.**

- 30 -

For more information, please contact:

John Shewchuk
Chief Managing Officer
(519) 578-3660

Quality • Inclusive • Faith-based • Education
w w w . w c d s b . c a