



# **Southeast Galt School Closure Review**

School Council Presentation

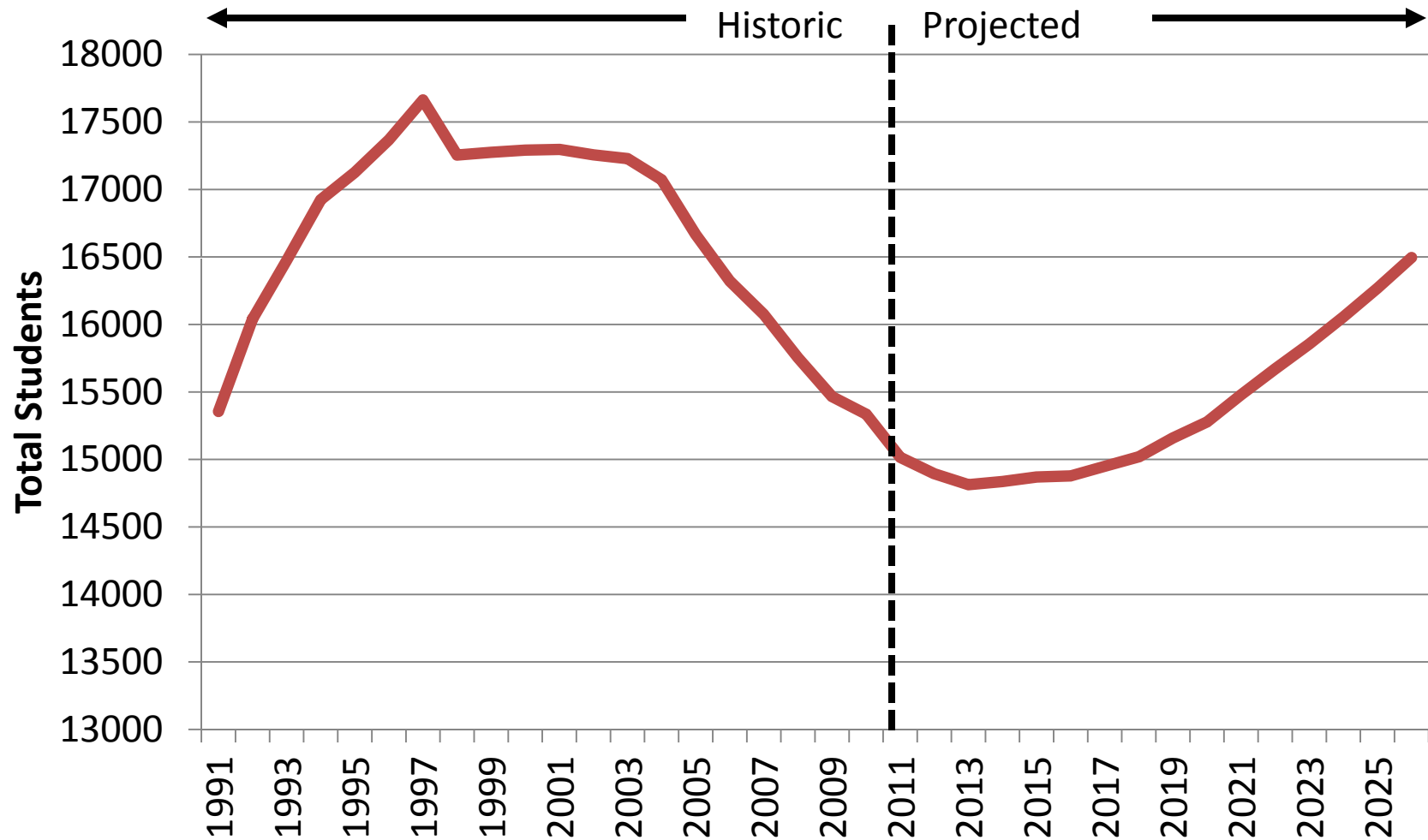
November 2011

w w w . w c d s b . c a

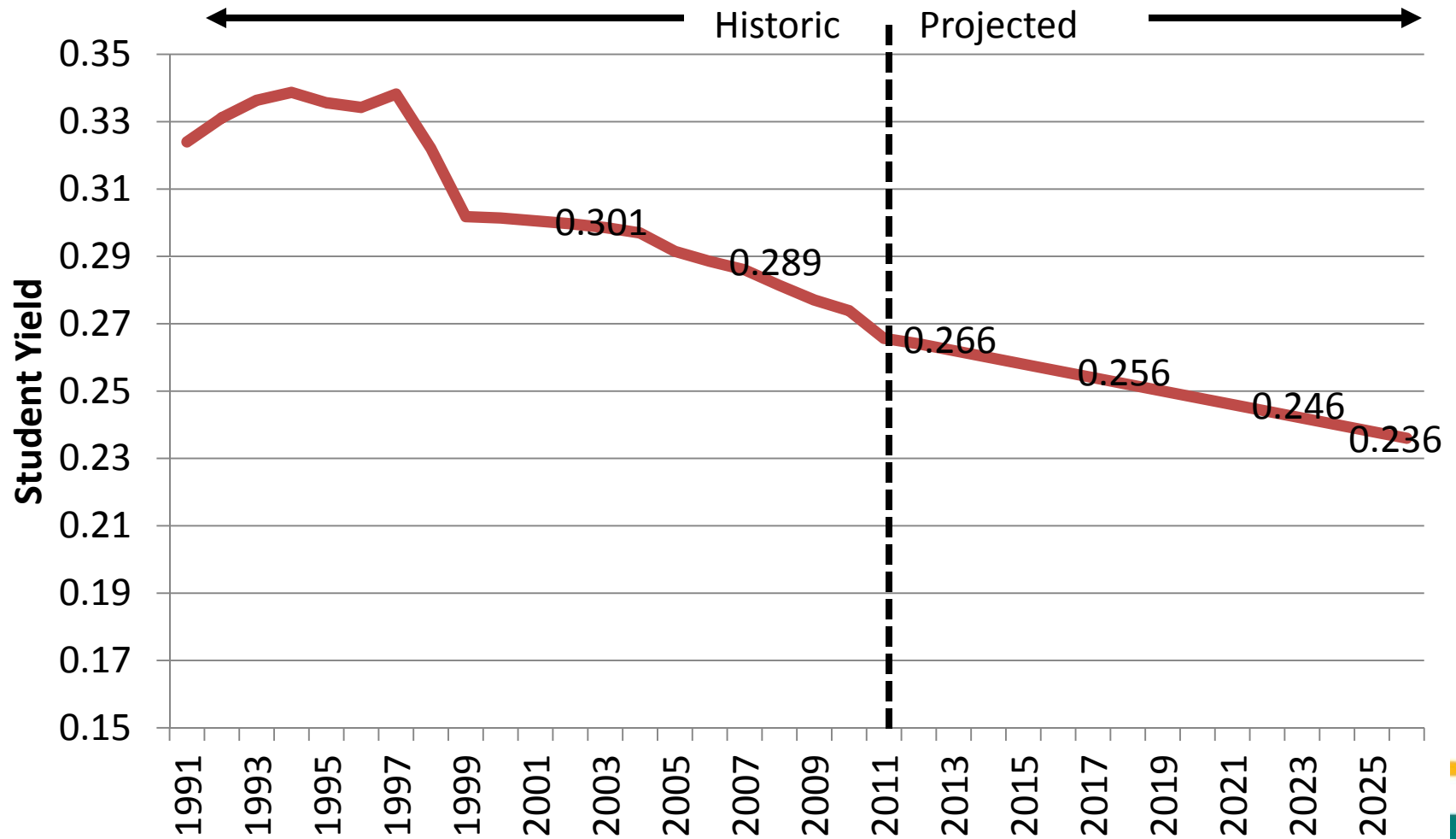
# Agenda

- Board-wide Challenges
- Southeast Galt Area
- Individual Schools
- Review Process

# Board-wide Enrolment



# Board-wide Student Yields



# Board-wide Challenges

- Declining enrolment
- Declining student yield
  - Student yield = WCDSB's share of students compared to WRDSB
  - Changing immigration patterns
  - Location of schools
- Small schools
  - Median elementary enrolment is 296 students (266 FTE)
  - Median elementary school capacity is 325 pupil places
- Funding provided on a per student basis and based on a school size of approximately 450 students.



# Southeast Galt

w w w . w c d s b . c a

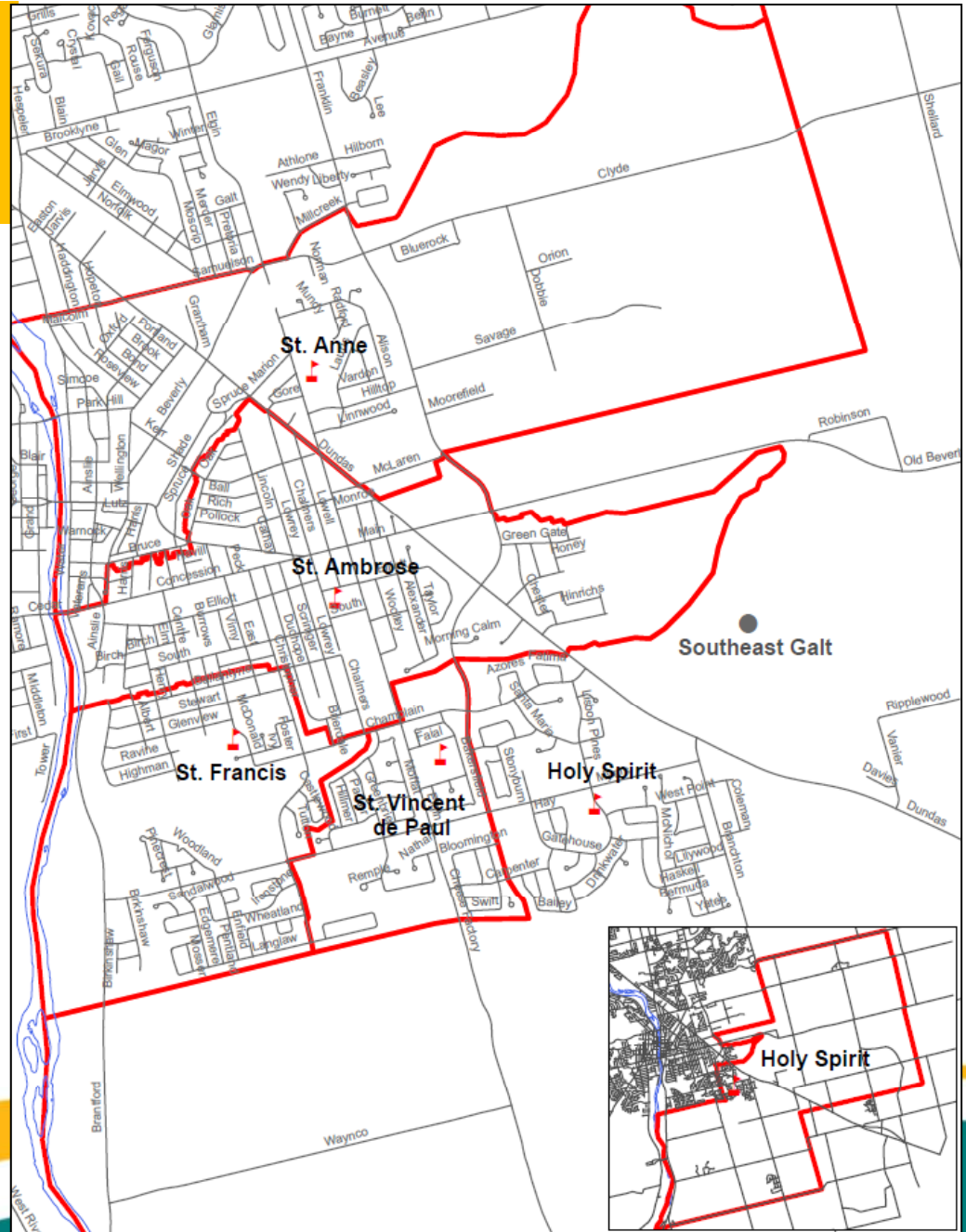
# Existing Boundaries

## Existing Schools:

- Holy Spirit
- St. Ambrose
- St. Anne
- St. Francis
- St. Vincent de Paul

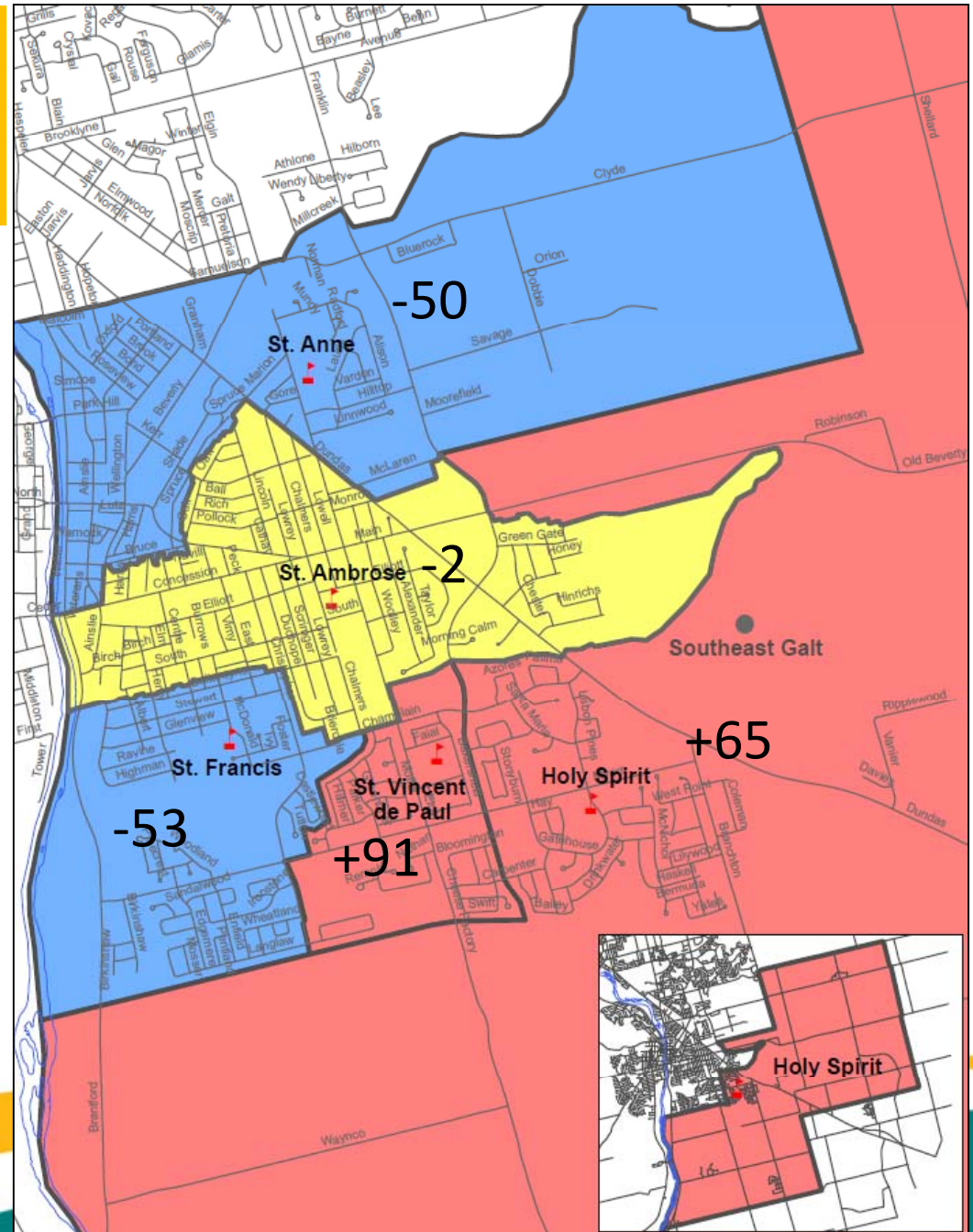
## Future School Site:

- Southeast Galt

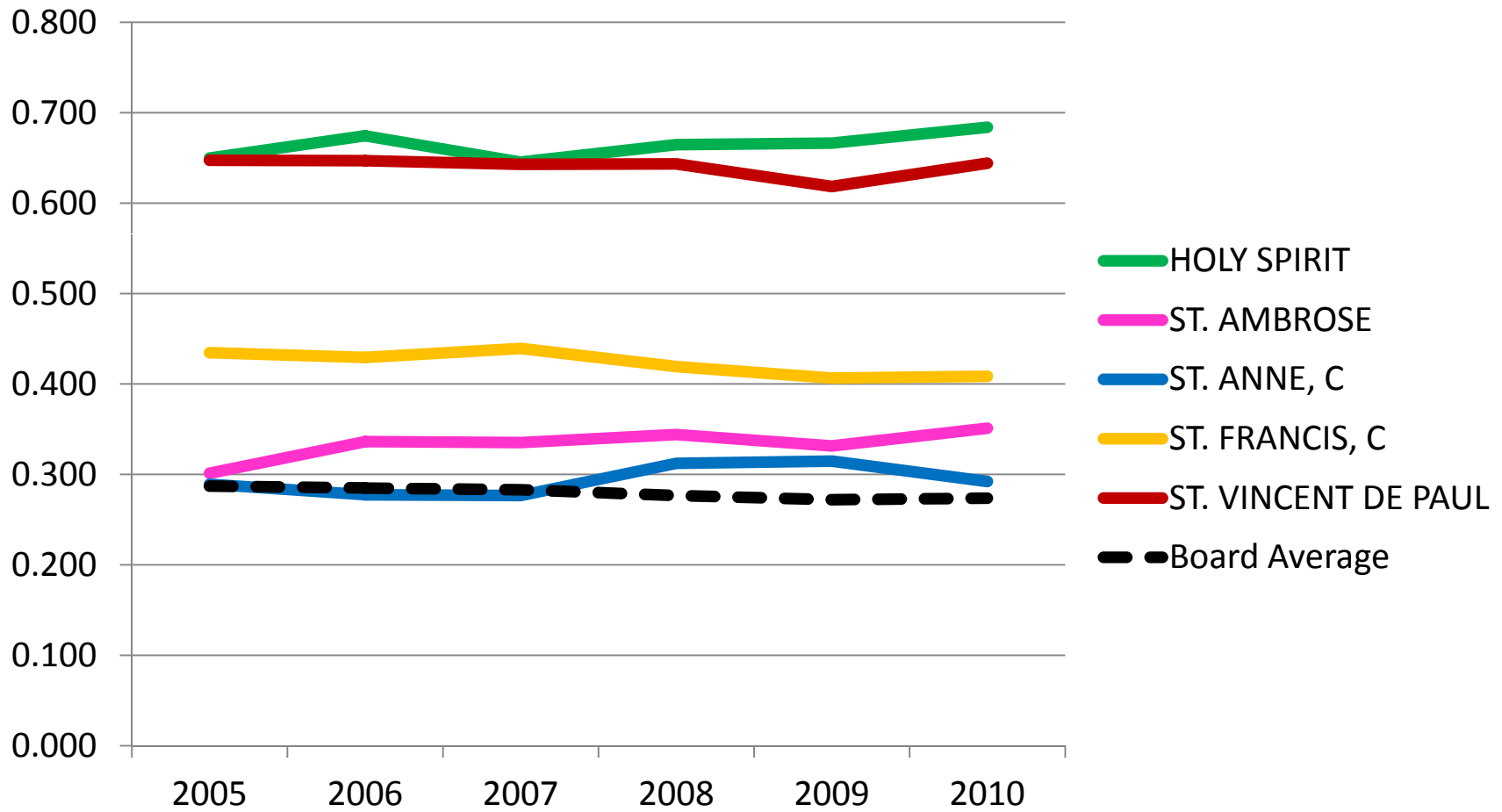


# Growth/Decline

- Comparison of 2006/07 enrolment vs. 2011/12
- St. Ambrose – New development east of Dundas has offset the decline on the west side.
- Enrolment is expected to continue growing in Southeast Galt, largely due to new development east of Dundas St.

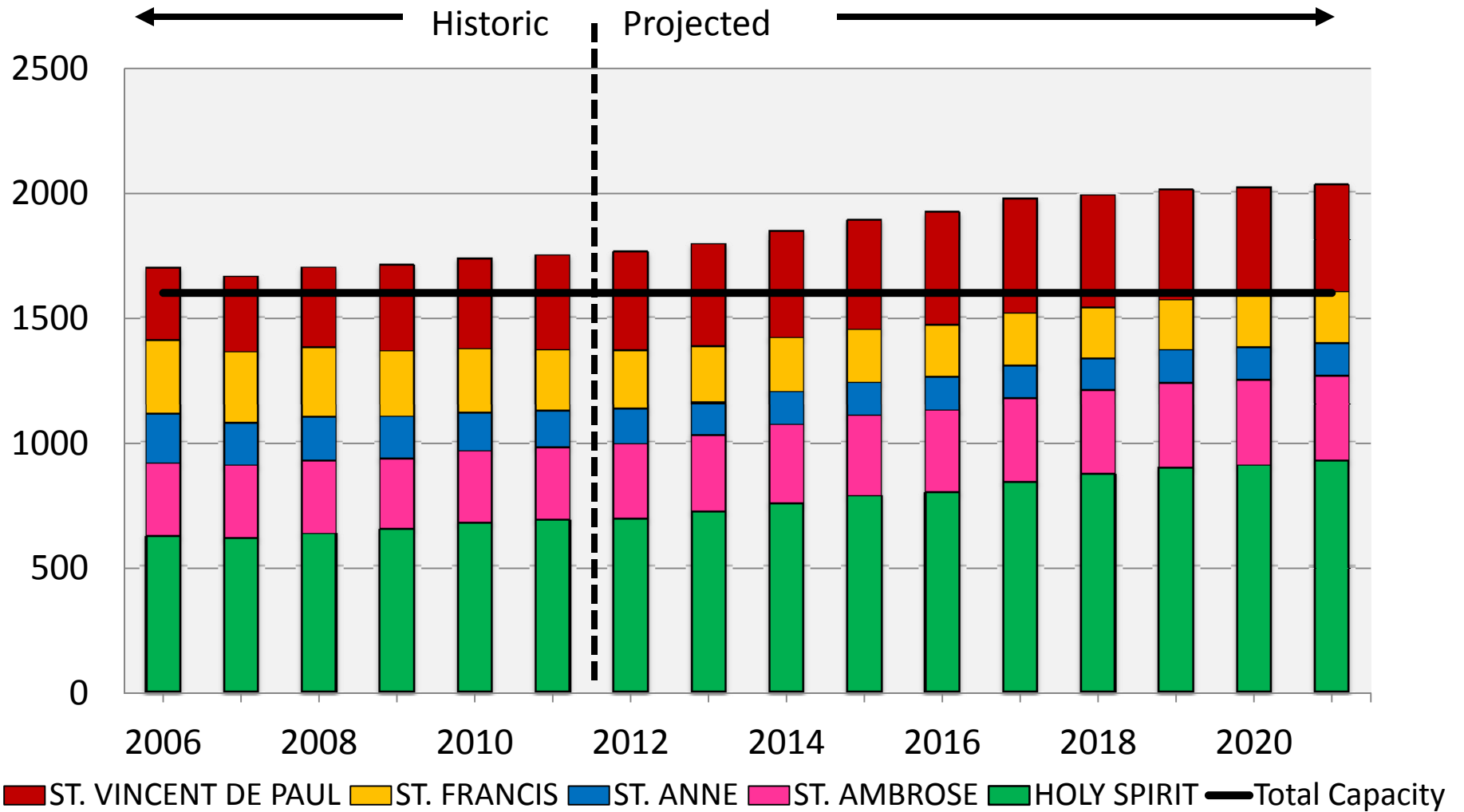


# Student Yields

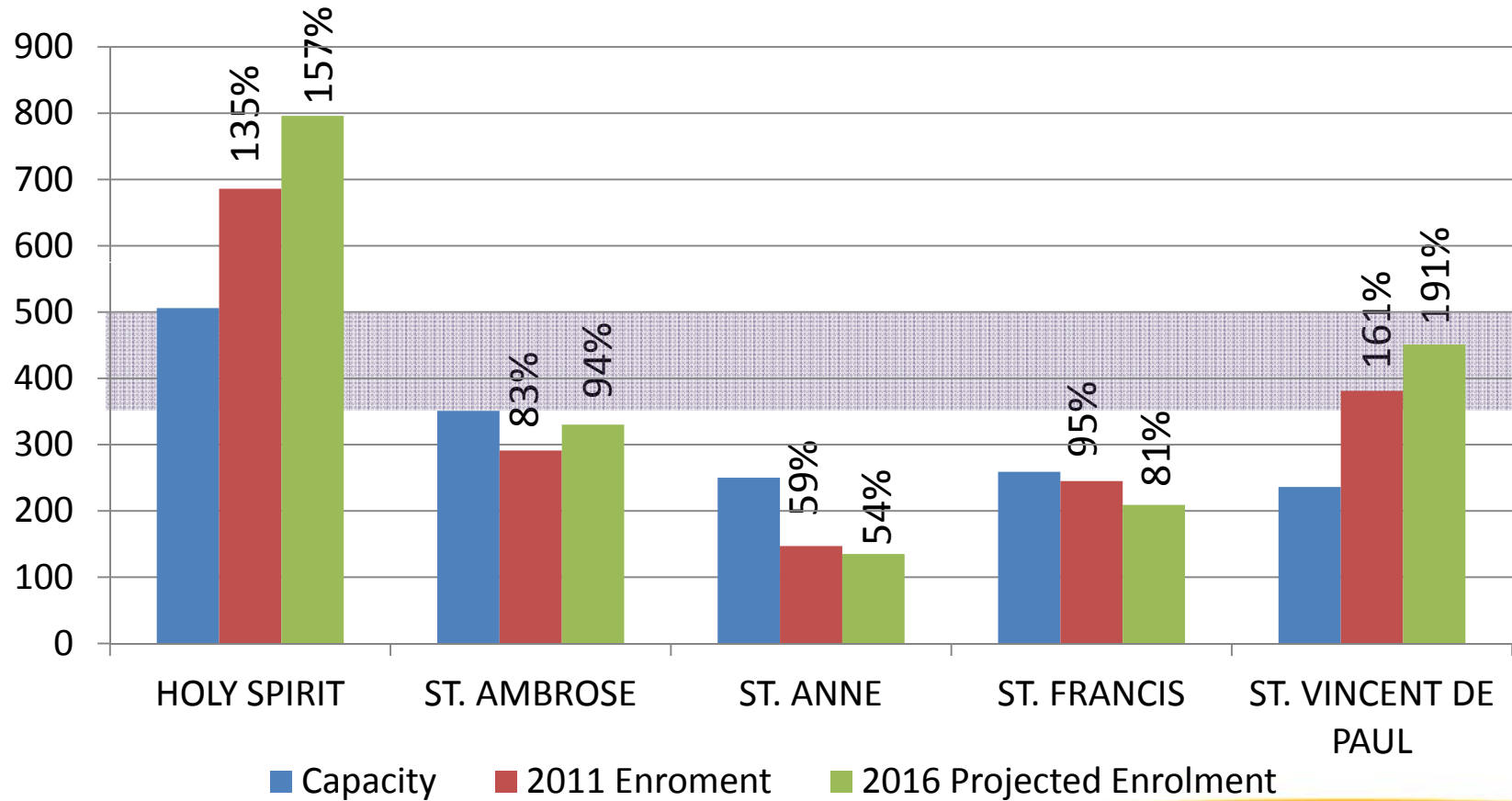


w w w . w c d s b . c a

# Enrolment vs. Capacity

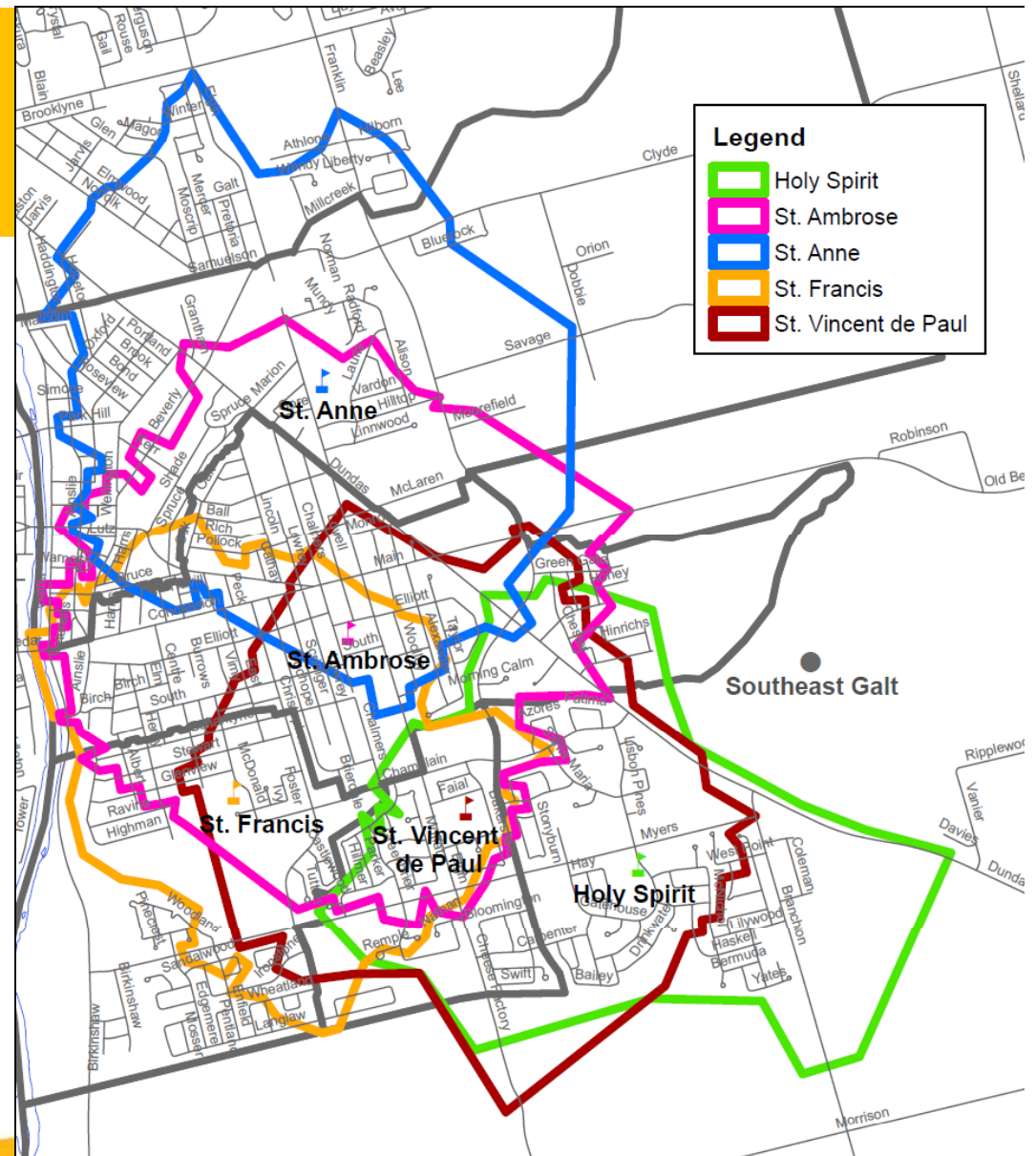


# Utilization



# Transportation

- Walking distance:
  - JK-Gr.3 = 0.8km
  - Gr.4-Gr.8 = 1.6km (shown on map)
- Significant overlap in walking areas
- Over half of the students in SE Galt are considered “walkers”
- Significant number of out of boundary students



# Holy Spirit

- Built in 2001
- 8 Classroom addition in 2005
- 6 Portables (2011)
- Enrolment projected to increase due to development east of Dundas Street
- 2 additional kindergarten rooms required for FDK
- 5.7 acres
- Park adjacent



Region of Waterloo Air Photo: 2009

# St. Ambrose

- Built in 1955 with additions in 1960, 1964, 1968
- 2.7 acres with very little green play space
- Adjacent to St. Ambrose Parish
- Shared parking
- Dolson Pool (City of Cambridge) addition in 1973
- FDK has been implemented using surplus space in the school



Region of Waterloo Air Photo: 2009

# St. Anne

- Built in 1965
- 6 Classroom & gymnasium addition in 1998
- Alison Park Neighbourhood Association / City of Cambridge partnership
- FDK has been implemented using surplus space in the school
- Declining enrolment may impact curriculum delivery
- 5.5 acres



Region of Waterloo Air Photo: 2009

# St. Francis

- Built in 1968
- 3.2 acres – small site
- Open-concept classrooms
- Insufficient Administrative and Special Education space
- 1 additional kindergarten room required for FDK
  - Problematic due to layout of building and site size



Region of Waterloo Air Photo: 2009

# St. Vincent de Paul

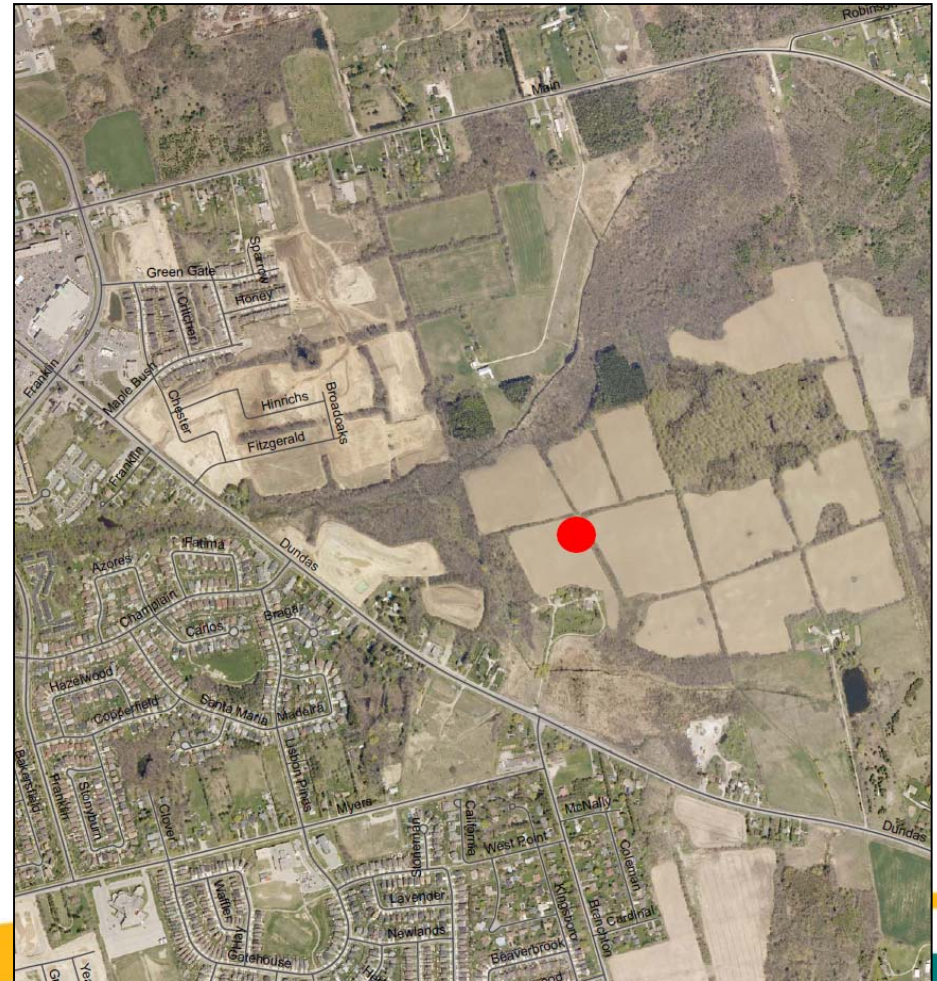
- 6.2 acres - adequate for 600 students
- Approx. 100 out of boundary students
- 6 portables (2011)
- Built in 1988 with modular construction (re-locatable)
- Permanent gym added in 1991
- Insufficient administrative and resource space
- 2 additional classrooms required for FDK



Region of Waterloo Air Photo: 2009

# Southeast Galt School

- WCDSB has an elementary school site reserved in the Southeast Galt subdivision (East of Dundas St.)
- Joint venture project with the City of Cambridge and Waterloo Region DSB



# Goals of the Review

- Determine the ideal long-term location and size for each Southeast Galt school.
- Determine long-term enrolment boundaries within the Southeast Galt Planning Area to balance enrolment amongst the schools.
- Explore the long-term sustainability of operating the schools in Southeast Galt.
- Establish the boundary and size of a new elementary school east of Dundas Street.

# Goals of the Review

- Address site size and/or facility issues at St. Ambrose, St. Francis and St. Vincent de Paul.
- Determine how the full day kindergarten program can be fully implemented by 2014.
- Maximize the number of walkers.



# School Closure Review Process

w w w . w c d s b . c a

# Policy Requirements

- Board Policy APF008: Pupil Accommodation Review Process
  - Part A – Boundary Review Process
  - Part B – School Closure Review Process
- Ministry Guideline
  - Pupil Accommodation Review Guideline – Oct 31, 2006
  - Revised Guideline – June 26, 2009

# Accommodation Review Committee (ARC)

## Committee Composition:

- School Superintendent (Chair)
- Two parent representatives from each school in the review
- Principal from each school included in the review
- Chief Financial Officer (or designate)
- Senior Manager of Capital Planning
- Chief Managing Officer
- Two Trustees (non-voting members)
- One business representative (where possible)
- One municipal representative (where possible)
- One parish representative (where possible)

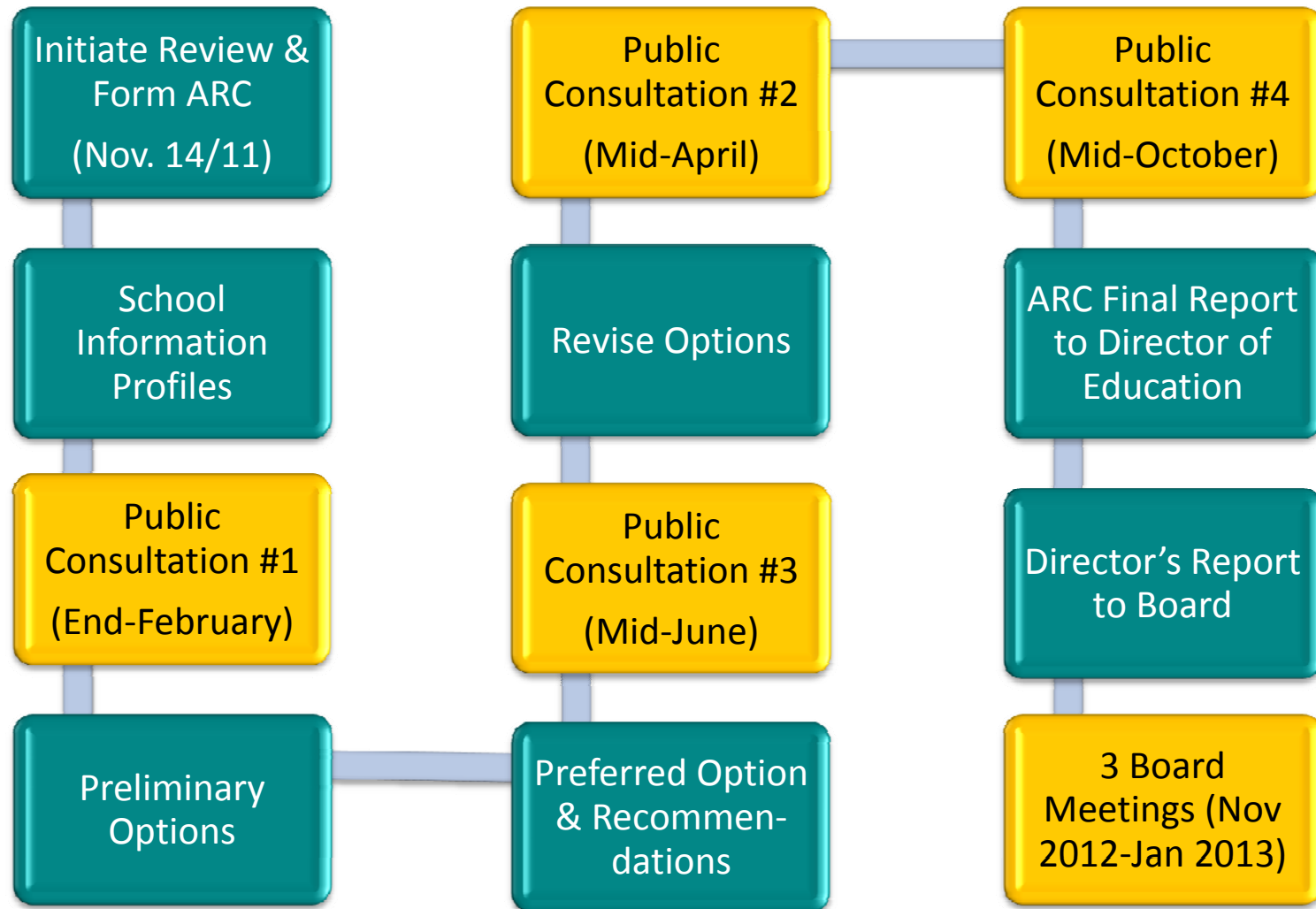
# Role of the ARC

- Take into consideration the long term learning needs of **all** WCDSB students and the limited resources of the system
- Examine background information
- Develop boundary/school closure/school construction options
- Review all written public comments
- Make recommendations to the Director of Education, which will be presented to the Board of Trustees
- 10 committee meetings (Jan. – Nov. 2012)
  - open to the public (audience may listen only)
- 4 Public Consultation Sessions

# Parent Representatives

- Provide insight into the school community
- Provide the committee with the parent's perspective
- It is **not** the role of the parent rep to:
  - Advocate for their particular school or neighbourhood
  - Act as a representative of the School Council or school community
  - Bring forward the opinions of other parents in the community to the ARC
- Application
  - Due December 13, 2011
  - Principal, in consultation with the school council, will select

# Review Process



# Questions

Visit: [www.wcdsb.ca](http://www.wcdsb.ca)

## Contact Information:

Phone: 519-578-3660 ext.2253 Lindsay Ford  
ext.2359 Shuyu Zhou

Email: [Planning@wcdsb.ca](mailto:Planning@wcdsb.ca)

To receive email updates, send us an email request