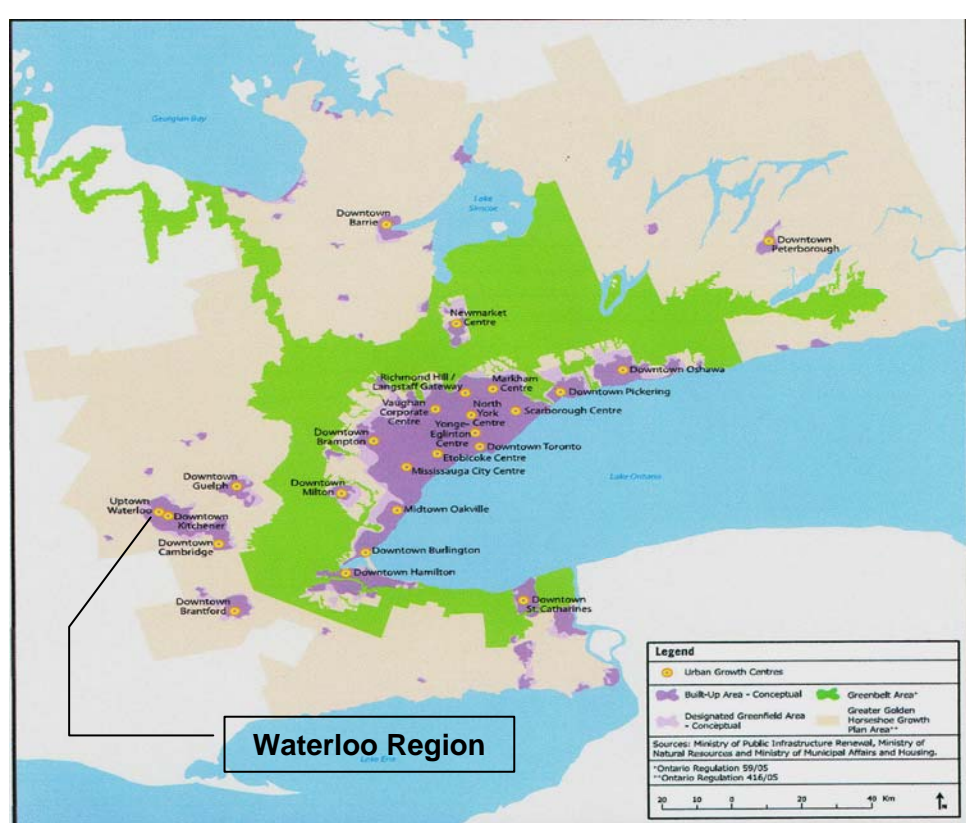


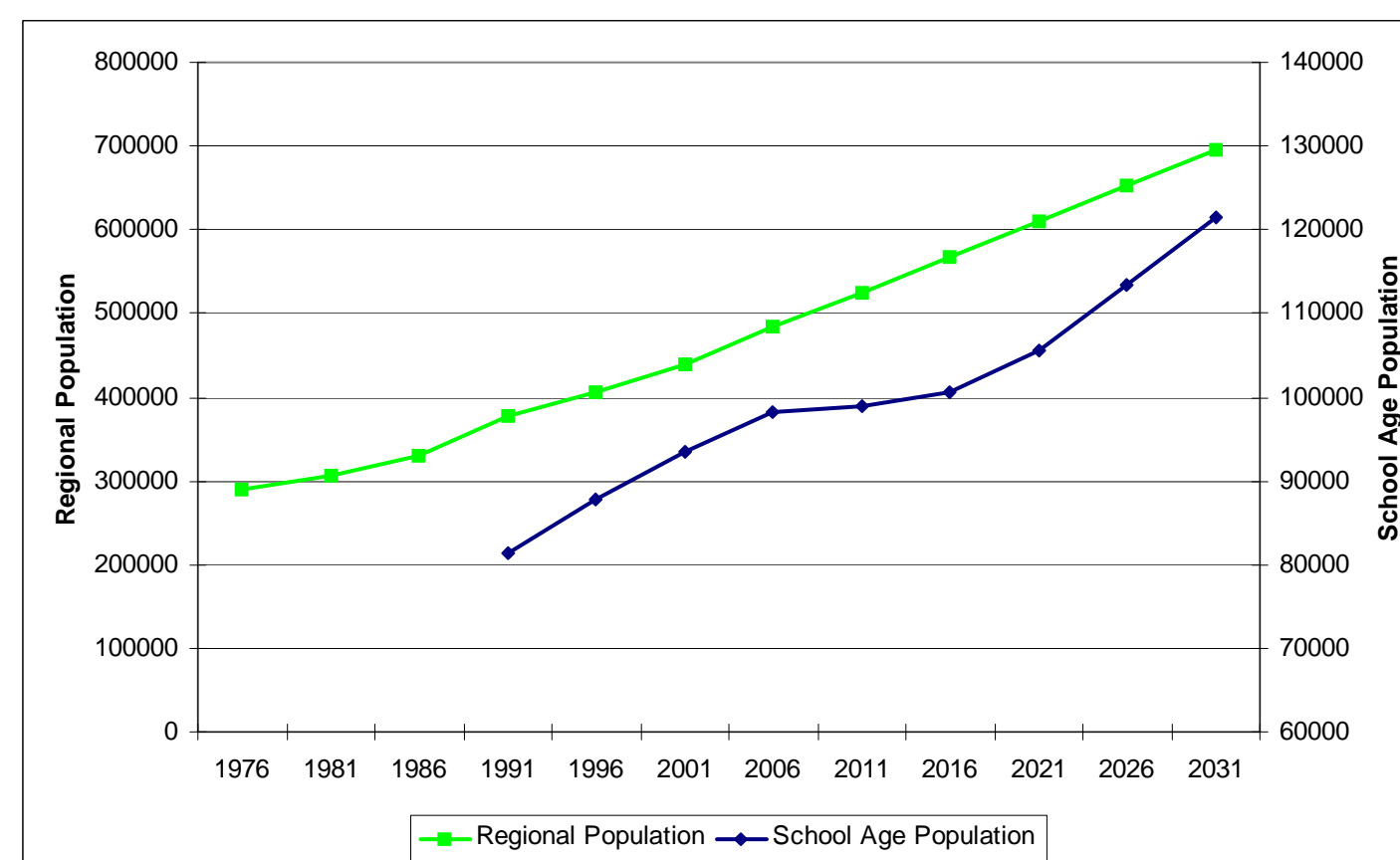
Demographics

Provincial - Places to Grow



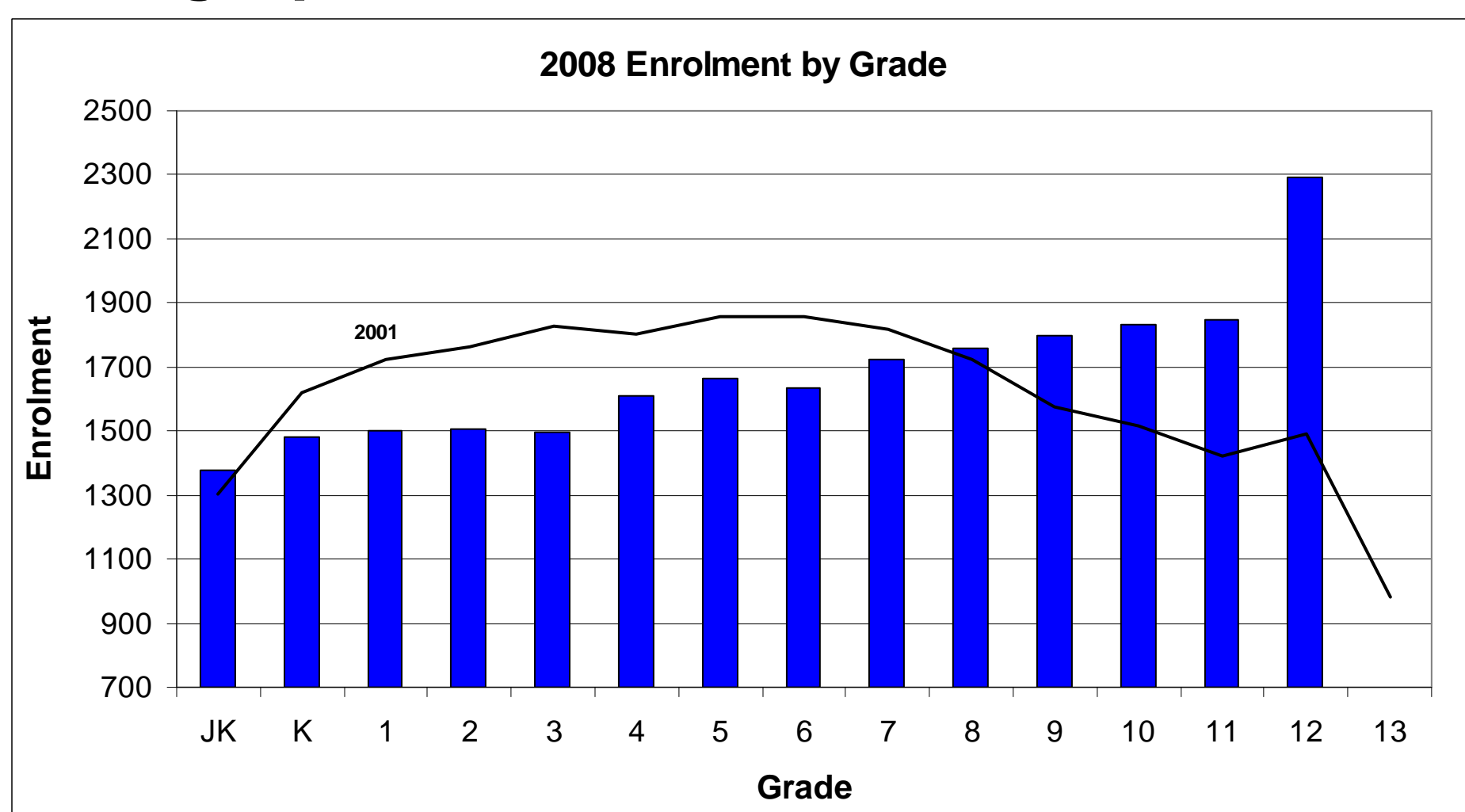
- Greater Golden Horseshoe is the fastest growing region in Canada
- Growth will be focused in designated Urban Growth Centres - includes Waterloo Region
- Waterloo Region's population is projected to be 729,000 by 2031
 - 51% increase from 2006 (2006 population was 498,000)
- Most of the growth will come from immigration & migration from other provinces

Region of Waterloo



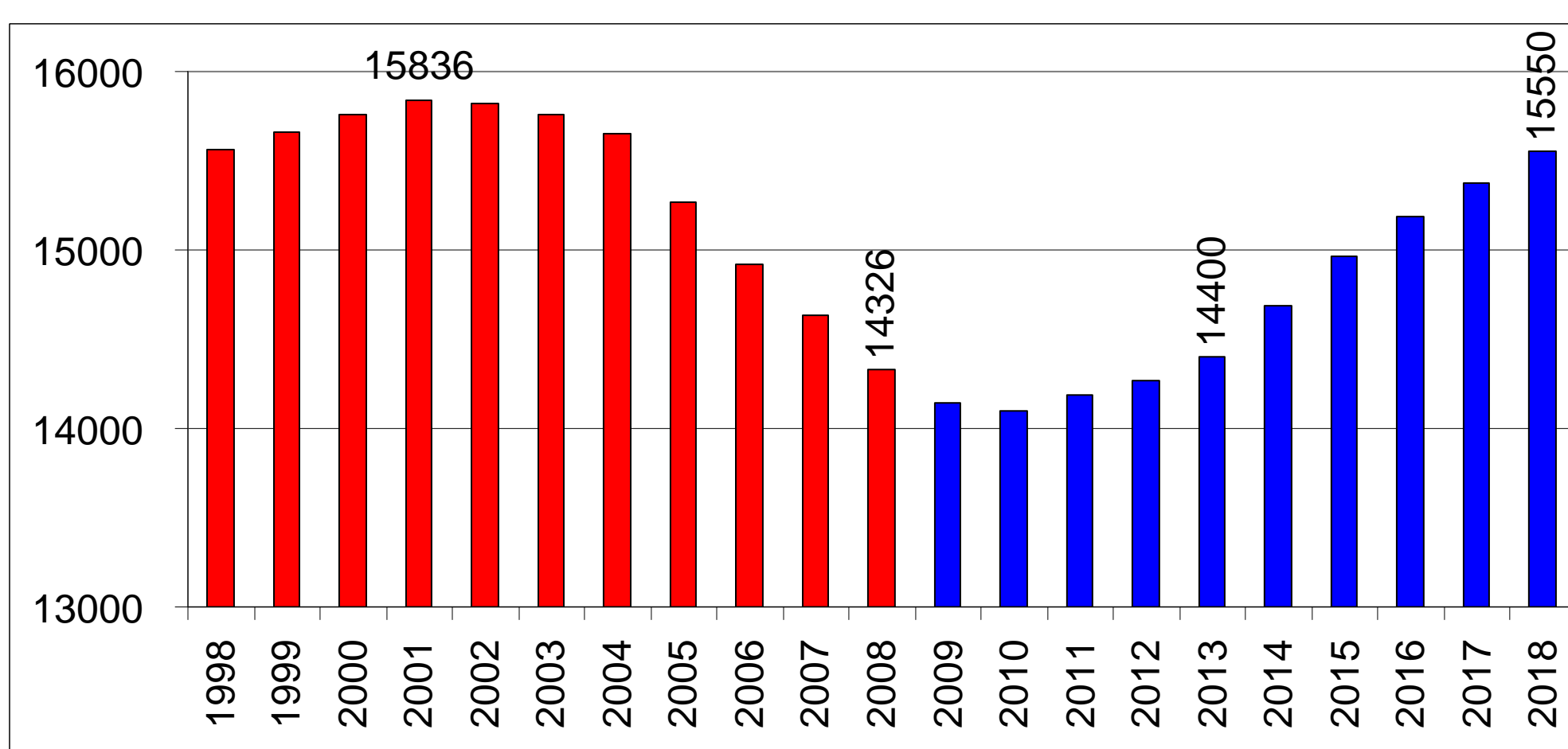
- Regional projections based on the Places to Grow Plan & cohort analysis
- Population is projected to increase
 - Increasing birth rates
 - Increasing immigration
- Intensification/increased densities are expected

Demographic Shift



- Baby Boom generation (1946 - 1964)
 - Major affect on the schools system (31 Catholic schools built in Waterloo Region while this generation was school aged)
- Baby Bust generation (1965 - 1979)
 - 45% smaller than Baby Boom generation
- Echo Boom generation (1982 - 1994)
 - Children of the Boomers
 - Reason for current elementary enrolment decline & secondary enrolment increases
 - Large grade 8 classes exiting the elementary panel replaced by small JK classes

Board-wide Elementary Enrolment



Elementary enrolment peaked in 2001 and has been rapidly declining ever since. This is the result of the Echo Boom generation passing through the elementary school system. Enrolment is expected to gradually increase over the next ten years but it is not expected to reach the same level as it was in 2001.

Enrolment projections are based on Regional projections, birth data and future residential development proposed within each school's boundary.

Existing Boundaries

